

# Lighting



**WACKER  
NEUSON**  
*all it takes!*



## Many lights are shining with Wacker Neuson.

### 1. Light to meet your needs.

Whether operated by electricity or fuel, with a mast, tripod or fastened to a support, our flexible lighting systems provide you with exactly the lighting solution that you need for your individual projects. Thanks to the modular principle, you also need less equipment, thereby reducing your investment costs.

### 2. Sturdy in application, easy to maintain.

Robustness and reliability are very important to Wacker Neuson – this also applies to the light balloon as well as for the light tower. Both systems are made for daily use, are wind and weather-resistant, are easy to operate and easy to maintain. A big plus – for your safety and your company's bottom line.

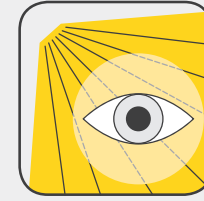
### 3. Large-scale and glare-free illumination.

With our lighting systems, you can optimally illuminate large work areas, often with just one unit. You thereby allow your employees to work safely and glare-free at night.

#### Wacker Neuson—all it takes!

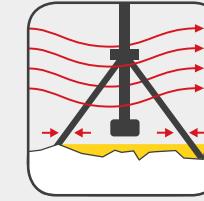
We offer products and services that meet your high requirements and diverse applications. Wacker Neuson stands for reliability. This of course also applies to all of our lighting systems. We do our best every day to ensure your success. And we come to work full of passion for the task at hand.

## Light expertise down to the last detail.



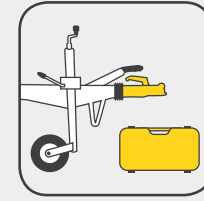
### Bright and glare-free

Our lighting systems make it possible to optimally illuminate your work areas in a glare-free manner and are particularly suitable for applications on jobsites and streets.



### Sturdy in any situation

With individually adjustable tripods and outriggers, our lighting systems can also be leveled on uneven ground and remain stable, even in strong winds.



### Easy to transport

With a trailer coupling or carrycase, our lighting systems can be very easily brought to the site of application.

## Overview of all lighting products.



LTE

Illumination: 3,800 m<sup>2</sup>  
Mast height: 8.5m  
Type of height adjustment: electrohydraulic

> Page 04

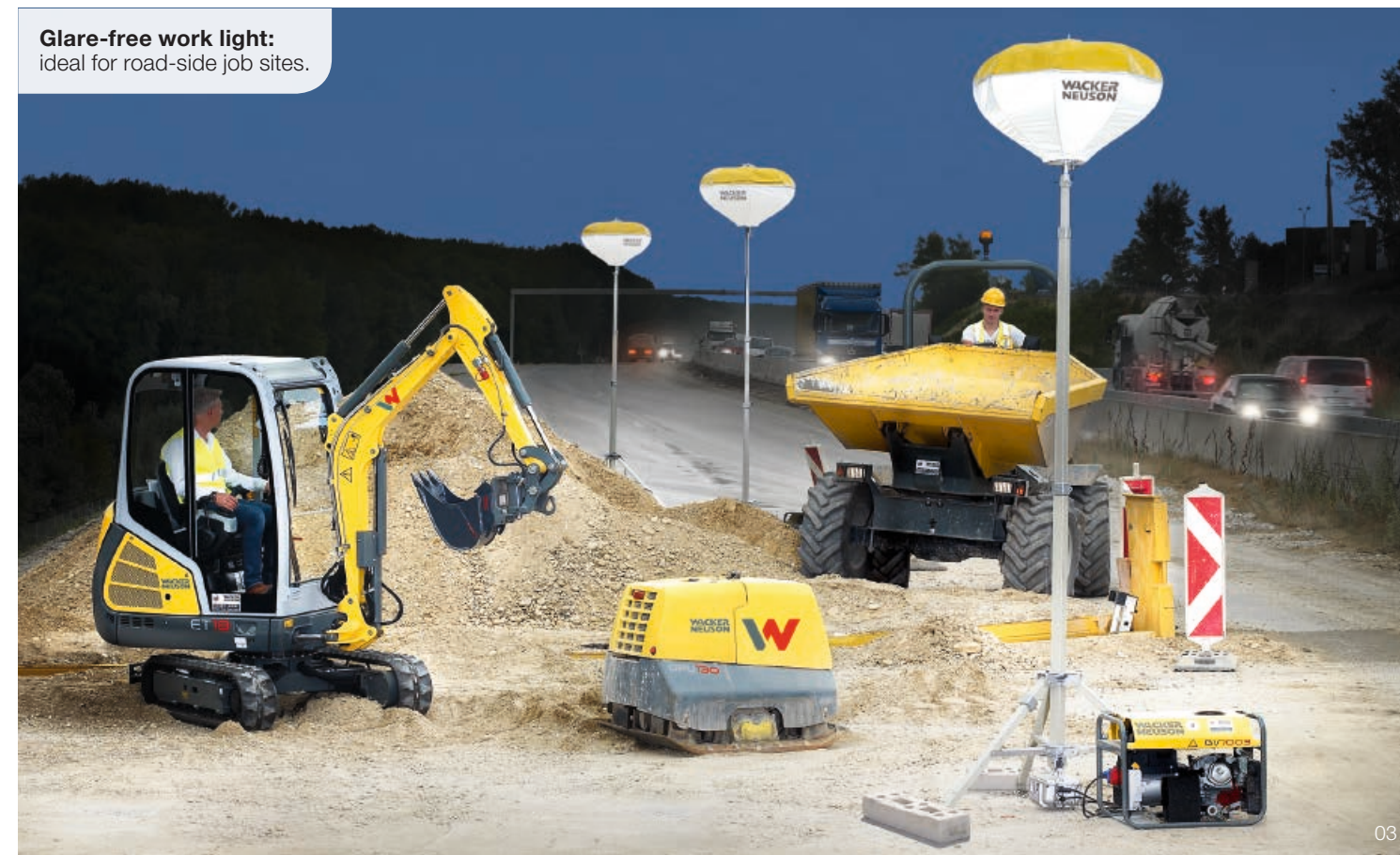


LBS

Power output: 2,000 W/1,000 W  
Luminous flux: 50,000/80,000 lm  
Illumination area with 20 lux: 154/315 m<sup>2</sup>

> Page 06

**Glare-free work light:**  
ideal for road-side job sites.





## Light tower: mobile, powerful and ideal for long-term applications.

When it comes to a mobile, powerful and permanent light supply for jobsites, road repairs at night or events, our light towers are indispensable.

- 6 LED lights illuminate an area of 3,800 m<sup>2</sup>
- Lights are manually activated by a timer or automatically via photo cells. When it gets dark, the lights turn on
- Standard generator for light, independent of the electric power supply
- Robust and weatherproof thanks to powder-coated and galvanized housing
- The trailer of the light tower has an European road circulation approval and is equipped as standard with a ball-shaped trailer hitch
- The optional safety system prevents the transport with an extended mast
- On uneven ground and in strong wind, 3 levelling jacks make it easier to align and stabilize the unit



LTE



**A 8.5 m high mast with hydraulic winch** – very easy to set up and adjust at the push of a button.

**The light tower**  
on the construction site  
turns the night into day.



## Technical data

SPECIFICATION	UNIT	LTE+K
Length x width x height	mm	2,550x1,380x2,430 mm
Operating weight	kg	965
Max. mast height	mm	8,500
Sound level at maximum performance	dB(A)	65
Output	kVA	1
AC voltage	V	230
Frequency	Hz	50
Power factor	-	1
Voltage regulation	-	± 5%
Type of lamp	-	LED
Illumination surface	m <sup>2</sup>	3,800 (5 lux min)
Generator	-	Linz ALUMEN SB
Engine	-	Kubota Z482
Max. rated power at nominal speed	kW(hp)	3.6 (4.8) at 1,500 rpm
Fuel tank capacity	l	110
Fuel consumption	l/h	0.55
Operating time	Hours	200

LIGHT TOWER



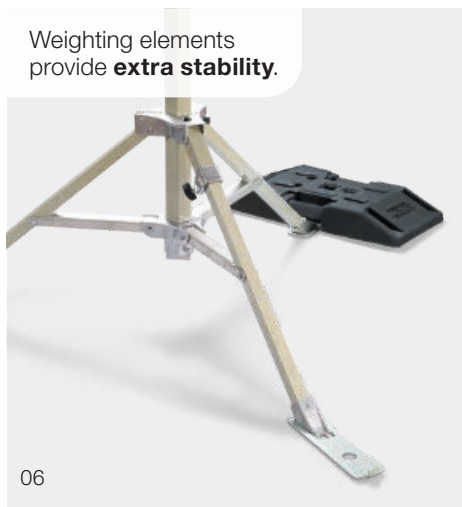
# The flexible light balloon modular system: individually configurable for your applications.

With the flexible modular system, you can individually adapt our light balloons to your needs. Select between two lamp and tripod types and many accessories. Sophisticated details offer you the decisive advantage in everyday work life with speed, safety and operating comfort.

- The system can be set up in less than 2 minutes
- Simply stretch the balloon, entirely without inflating it
- Very compact storage and transport dimensions
- The tripods are break-proof, deformation-resistant, lightweight and sturdy, as they are made of glass fiber-reinforced synthetic material (GFK)
- For optimal illumination of the work area: elliptical balloon shape with a strong reflecting surface
- Uniquely sturdy and extremely stable tripod with weighting elements that make it stable in winds up to 100 km/h\*

\* The stability values mentioned presume a constant wind direction as well as good footing of the tripod on a solid level subsurface.

**Bright and glare-free** – ideal for working on roads and highways.



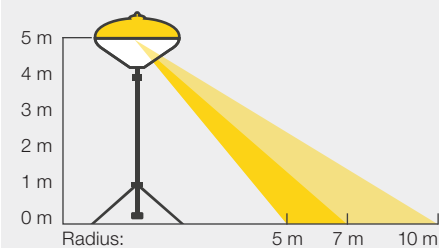
Weighting elements provide **extra stability**.



**Inspiring:** the light intensity of the LBS.

## Luminous intensity of the LB80M:

lighting radius of up to 10 m with at least 20 lux.



# Get the light balloon for your requirements in three steps.

## Flexible light balloon modular system:

**1. Light balloon:** select a halogen lamp type: 80,000 or 50,000 lumens.



**2. Tripods:** decide on a tripod: 3.4 m or 5 m light source height.



**3. Convenient accessories:** place an optional order: carrycase or sack, carrying strap, anchoring set, adapter for weighting elements, joint.

## Technical data

LIGHT BALLOON	SPECIFICATION	UNIT	LBS	LBS
			80M	50H
	Balloon (tensioned) Ø x H	mm	1,000x700	1,000x700
	Balloon weight	kg	9.1	8.6
	Carrycase weight (empty weight)	kg	6.8	6.8
	Carrycase	mm	1,350x455x235	1,350x455x235
	Lamp output	W	1,000	2,000
	Type of lamp	-	Halogen metal halide	Halogen
	Lighting current	lm	80,000	50,000
	Illumination	in m <sup>2</sup>	315	154

BALLAST	SPECIFICATION	UNIT	LBV	LB
			LB80M	LB50H
	Weight	kg	16.3	-
	Voltage	V	230	-
	Frequency	Hz	50	-

TRIPODS	SPECIFICATION	UNIT	Tripod Pro	Tripod Compact
			LxWxH (operating state, without anchoring set)	mm
	Weight	kg	17	14.6
	Max. light source height	m	5'	3.40

\* Corresponds to RSA 95 (directives for the safety of work premises on roads)

The Wacker Neuson product range includes over 300 different product series with different versions. The product data may vary accordingly with the selection of different options. Not all Wacker Neuson products listed or shown here are however available or allowed in all countries. The Wacker Neuson products shown are examples and as such are subject to changes. We are happy to make you a specific offer upon request!

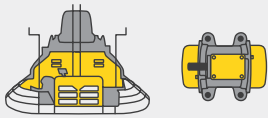
Reproduction only with the written approval of Wacker Neuson.

Your everyday work day is full of challenges.

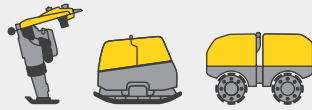
We have the right solutions and help you to be ahead of the competition.

We offer you everything you need for this purpose: **Wacker Neuson—all it takes!**

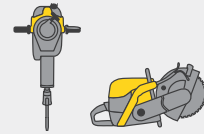
## Products



Concrete technology



Compaction



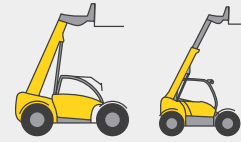
Demolition technology



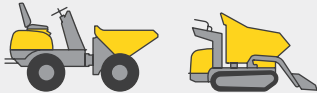
Excavators



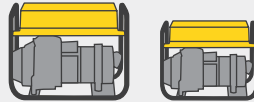
Wheel loaders



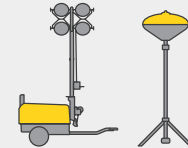
Telehandlers



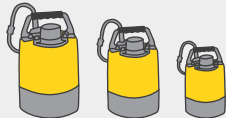
Dumpers



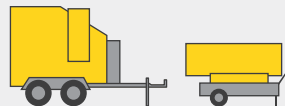
Generators



Lighting



Pumps



Heaters



Used equipment

## Services



Financial solutions



Repair & maintenance



Academy



Rental



Telematics



The concrete specialists



eStore

## Genuine parts



[www.wackerneuson.com](http://www.wackerneuson.com)



WN.EMEA.10168.V03.EN-US